



K-12 Charlotte Mason Public School

Presentation Outline

LIST OF TOPICS

About Charter Schools
Gillingham's Beliefs
Gillingham's Practices
Gillingham's Results
Q & A





"CHARTER SCHOOLS WILL
SERVE AS LABORATORIES OF
INNOVATION"

*Pennsylvania Department
of Education*

Innovation
increases...



*Student
Learning*

*Teacher
Opportunities*

*Parent Choice
& Voice*

TUITION FREE PUBLIC SCHOOL

Self-Managed

Distinct

Created by Local Citizens

Finances Redirected through Districts

Bound to State Testing

Non-Discriminatory and Lottery Based

Health & Safety Laws

CHARTER

5 Year Legal Contract

District or State Approved

What is a
charter
school?

K–12th Grades

Established 2011

Non-Sectarian, Free Public School

Schuylkill County School Districts and
Beyond

Charlotte Mason Institute Accreditation





Why We Exist

"For the children's sake."



OUR DREAM

We want to go there.
We don't just have to go
there.

- a child is not a number
- teachers love students and what they do
- students learn how to learn and to live a full life
- create and imagine, play, smile and laugh.
-
- no one is bored or overworked
- no one is bullied by classmate or adult
- EVERYONE feels wanted.

OUR VISION



STUDENTS WILL BE PROUD....

- **OF WHO THEY ARE,**
- **FROM WHENCE THEY COME &**
- **FOR WHAT THEY WILL DO FOR THIS COMMUNITY & BEYOND**

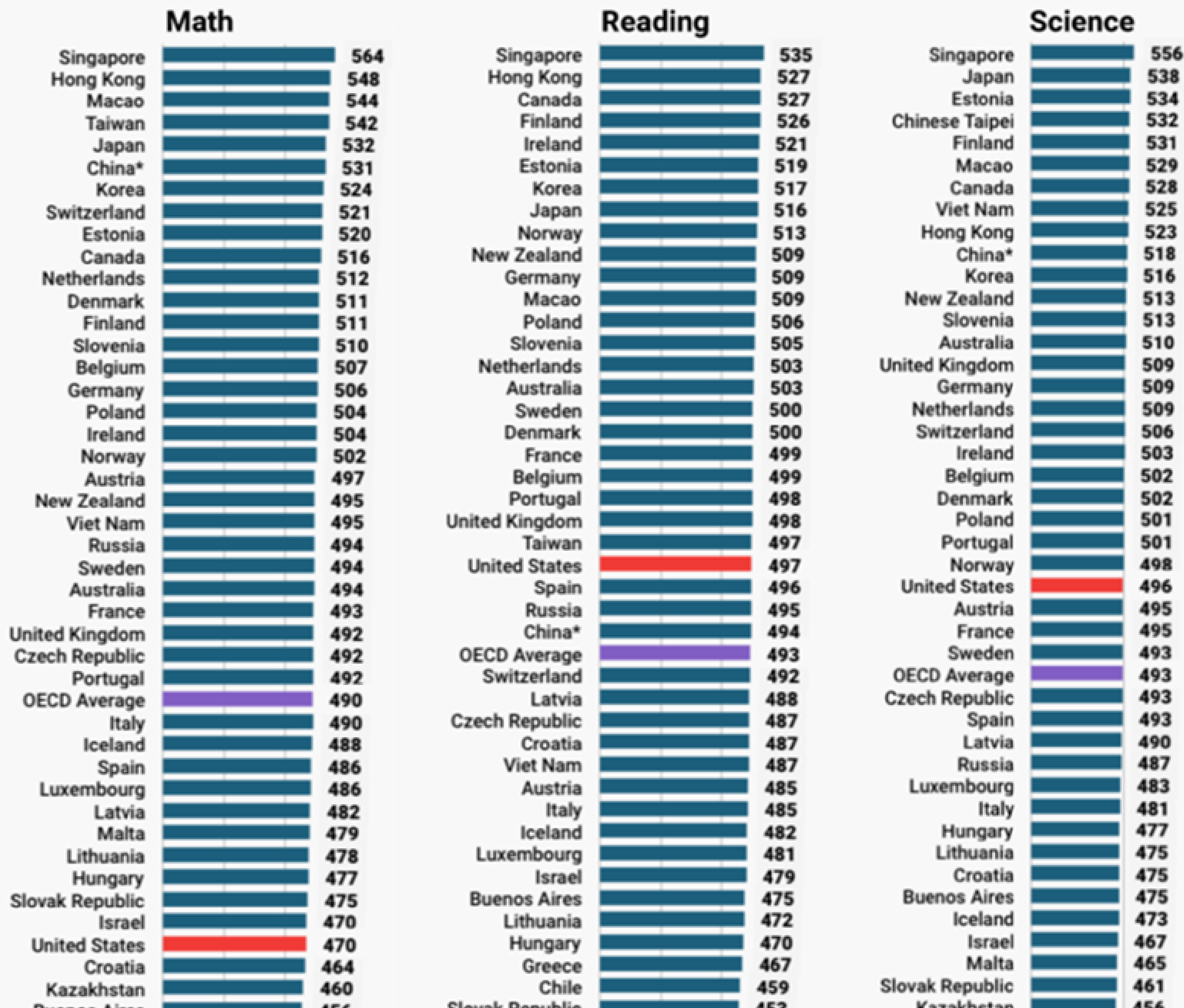
OUR MISSION



Since we believe that children are persons, we offer a Relational Education based on the Charlotte Mason philosophy that fosters within them an avid desire for a life of learning, enabling them to author their own lives confidently and resiliently.

2015 PISA AVERAGE SCORES

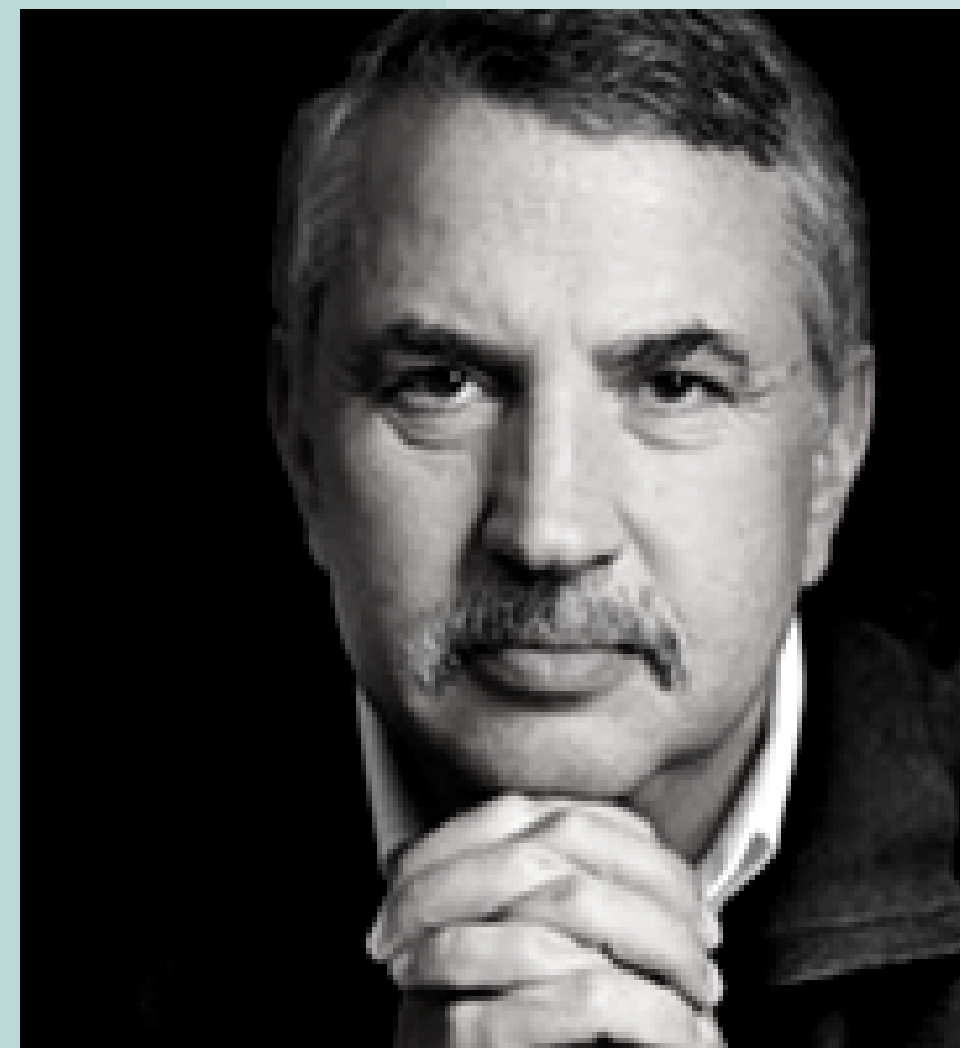
21st
Century
Resiliency



“

"WHAT EVERY EMPLOYER IS
LOOKING FOR IS NOT SOMEONE
WHO CAN DO THE JOB, BUT
SOMEONE WHO CAN **REINVENT**
THE JOB"

Thomas L. Friedman



The Soft Skills of a LINCHPIN

Employees seek these skills.

Entrepreneurs need these skills.

Linchpins have these skills.

Communication

Teamwork

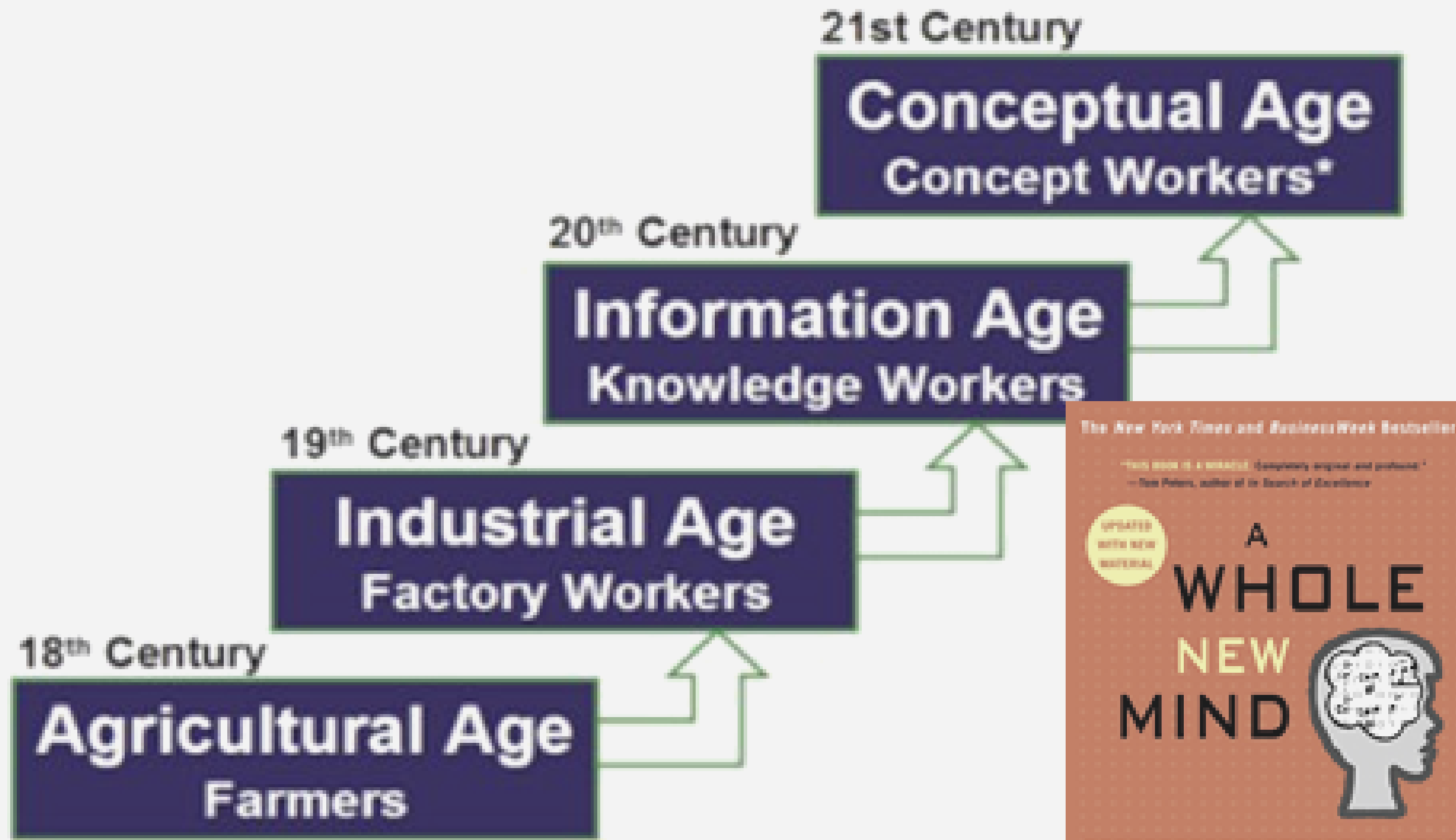
Adaptability

Problem Solving

Critical Observation

Conflict Resolution

Leadership



Source: Dan Pink

O Me! O life! of the questions of
these recurring,
Of the endless trains of the faithless, of
cities fill'd with the foolish,
Of myself forever reproaching myself, (for
who more foolish than I, and who more
faithless?)

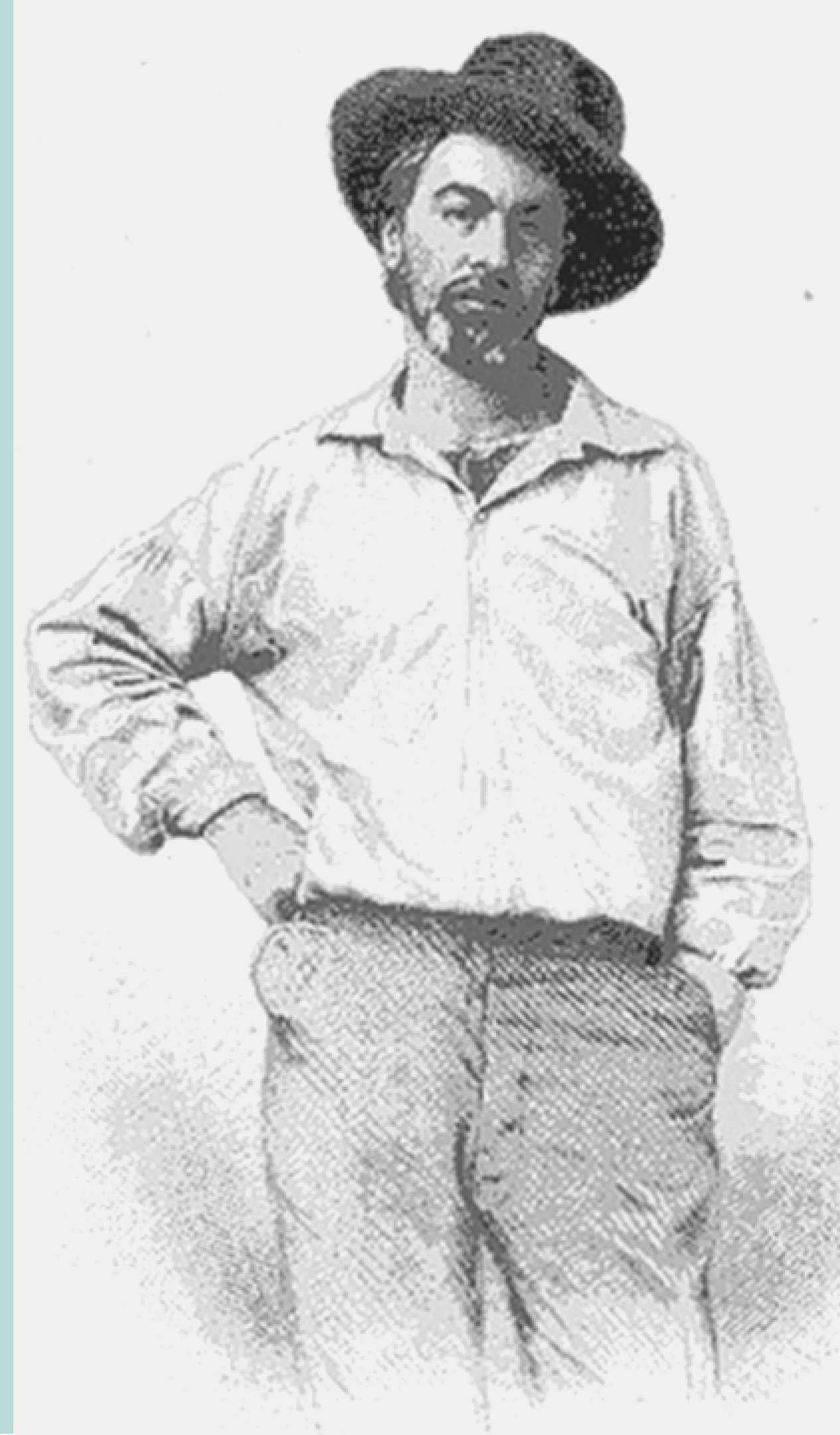
Of eyes that vainly crave the light, of the
objects mean, of the struggle ever
renew'd, Of the poor results of all, of the
plodding and sordid crowds I see around
me, Of the empty and useless years of the
rest, with the rest me intertwined,

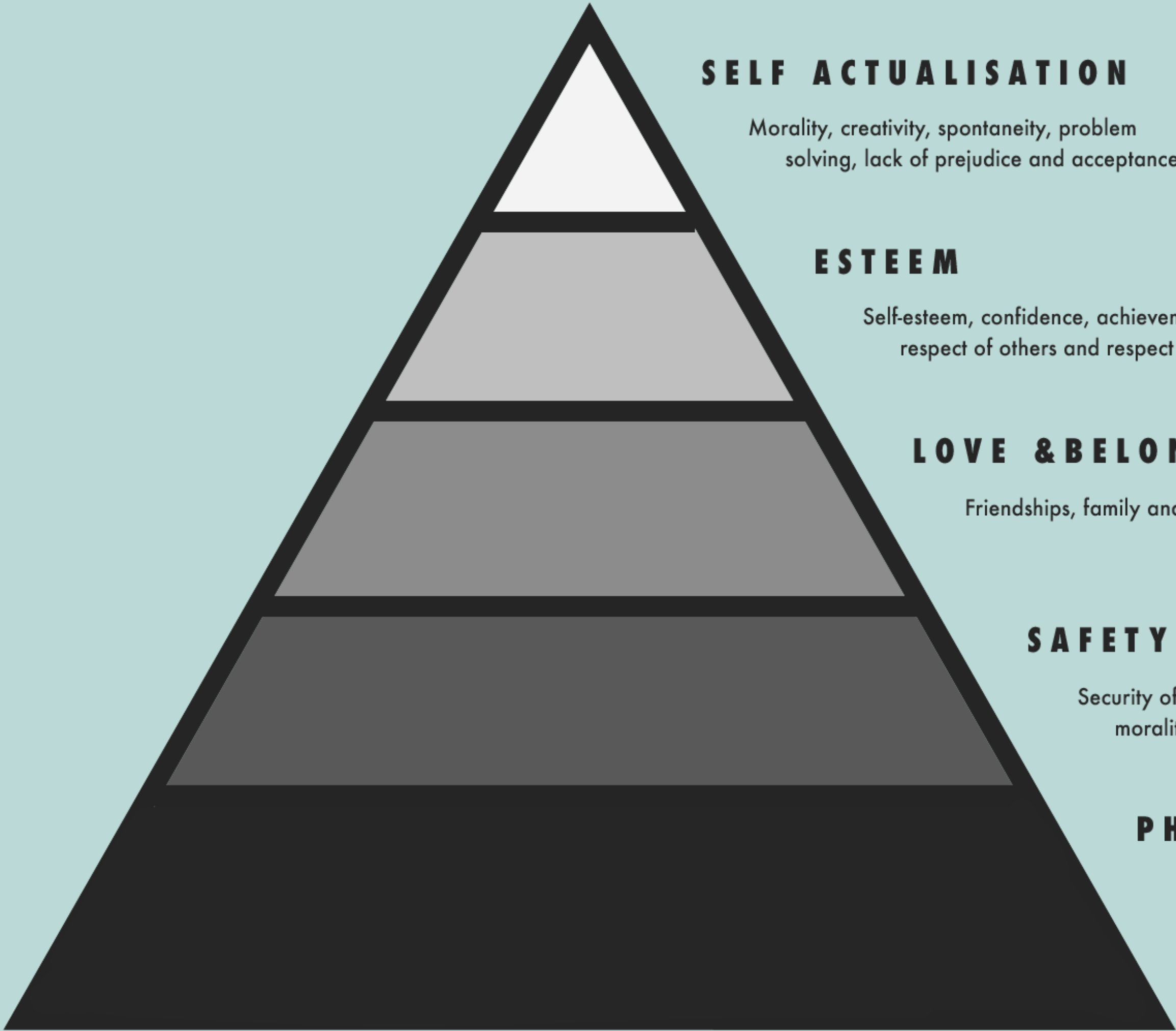
**The question, O me! so sad, recurring-What
good amid these, O me, O life?**

Answer.

**That you are here-that life exists and
identity,**

**That the powerful play goes on, and you
may contribute a verse.**





SELF ACTUALISATION

Morality, creativity, spontaneity, problem solving, lack of prejudice and acceptance of facts.

ESTEEM

Self-esteem, confidence, achievement, respect of others and respect by others.

LOVE & BELONGING

Friendships, family and sexual intimacy.

SAFETY

Security of: body, employment, recourses, morality, the family, health and property.

PHYSIOLOGICAL

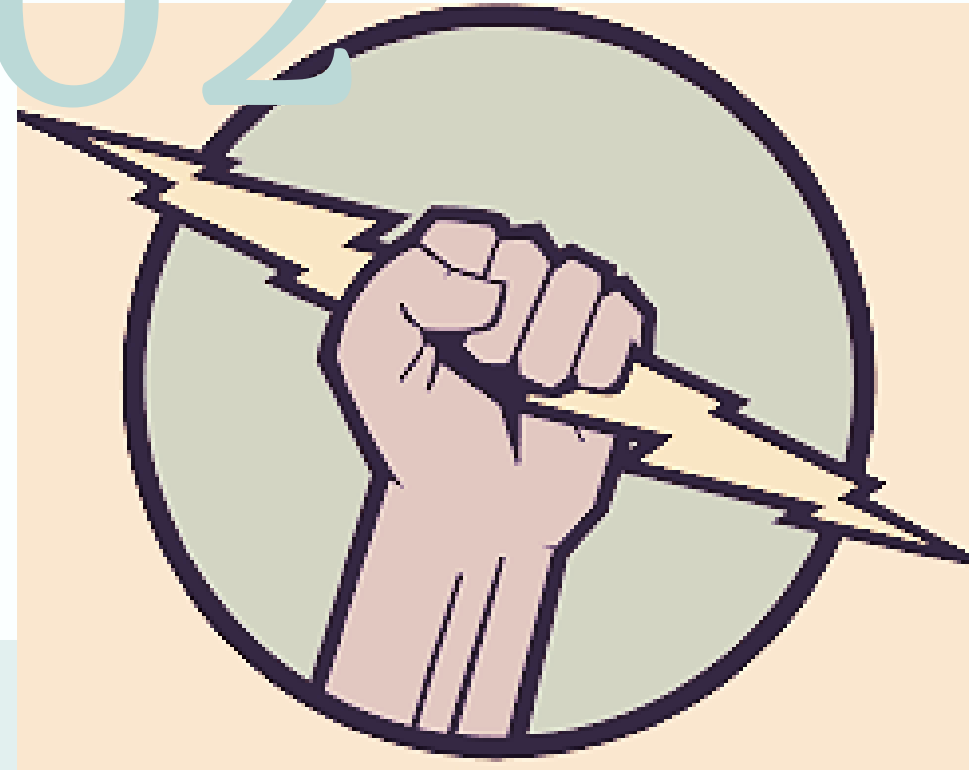
Breathing, food, water, sex, sleep, homeostasis and excretion.

01



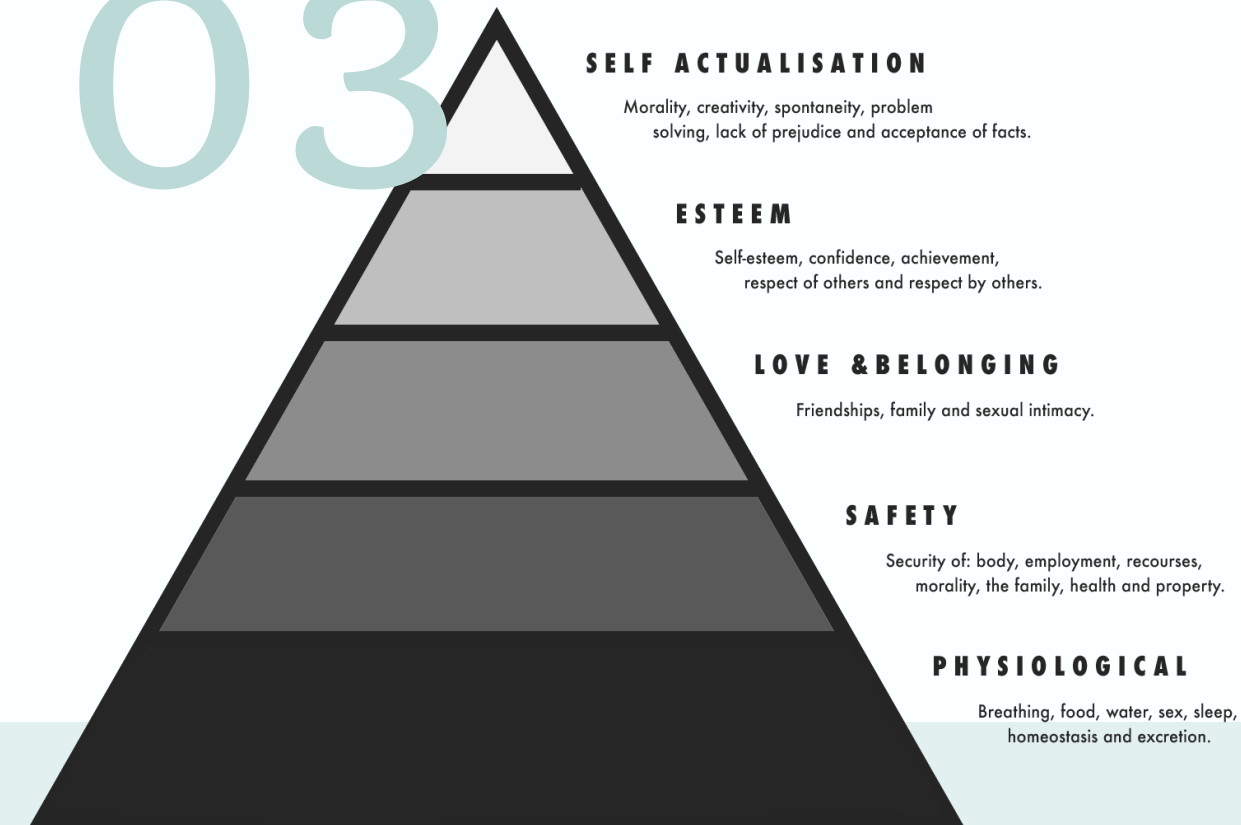
Globally Competitive

02



Linchpin

03



Purposeful Life



What We Believe

Education is the science of relations.

Children are
born persons.

~Charlotte Mason



the Whole Child

- ❖ Intellectual
- ❖ Physical
- ❖ Spiritual
- ❖ Social
- ❖ Emotional
- ❖ Creative



"All education is
self-education."



What We Do

*"Education is an atmosphere,
a discipline & a life."*

GILLINGHAM
CHARTER SCHOOL

EDUCATION IS....



*An
Atmosphere*



*A
Discipline*



*A
Life*

EDUCATION IS....



*An
Atmosphere*

Beauty & Order

Humane Schedule

Co-Learning

Relationships



BEAUTY & ORDER



BEAUTY & ORDER



BEAUTY & ORDER



BEAUTY & ORDER



BEAUTY & ORDER

"I am, I can, I ought, I will."



BEAUTY & ORDER



BEAUTY & ORDER

maple

oak

ginkgo

walnut

willow

beech

assafras



Johann Sebastian Bach



Beatrix Potter



Ludwig van Beethoven



Take Home Folder

BEAUTY & ORDER



BEAUTY & ORDER

BEAUTY & ORDER





BEAUTY & ORDER



BEAUTY & ORDER



BEAUTY & ORDER



BEAUTY & ORDER

0 100 200 300 400 500 600 700 800 900 1,000



BEAUTY & ORDER



BEAUTY & ORDER



BEAUTY & ORDER



SCHEDULE





BEAUTY & ORDER



Restorative Practices

Building Connections to Change Behaviors,
Repair Relationships and Improve Results



SCHEDULE



BEAUTY & ORDER



RELATIONSHIPS

EDUCATION IS....



A

Discipline

Habits

Soft Skills

Narration

Restorative
Practices & NHA



HABITS

means of entertainment were gambling, reading, playing tricks, playing games such as checkers, and looking for liquor.

Camp life was a rough life. The meals consisted of hardtack (basically a "pre-staled" bread), sas belly (salted pork) and coffee. The hardtack was full of weevils and the men would spend a while picking them out before they ate.

One man said he preferred toasting his hardtack for he liked his meat cooked. The sas belly was often rancid and only the desperately hungry men would eat it. The coffee was made in a very rustic manner. The beans were crushed with the end of a gun, making for very thick coffee.

The life was not easy, though they tried to bring merriment. One man, by the name of Fraser wrote to his family saying "if marching 10 to 20 miles a day, in the scorching sun, carrying a mule-load of supplies, up to your knees in the 'dead-end' trail"



SOFT SKILLS



NURTURED HEART
APPROACH®

EDUCATION IS....



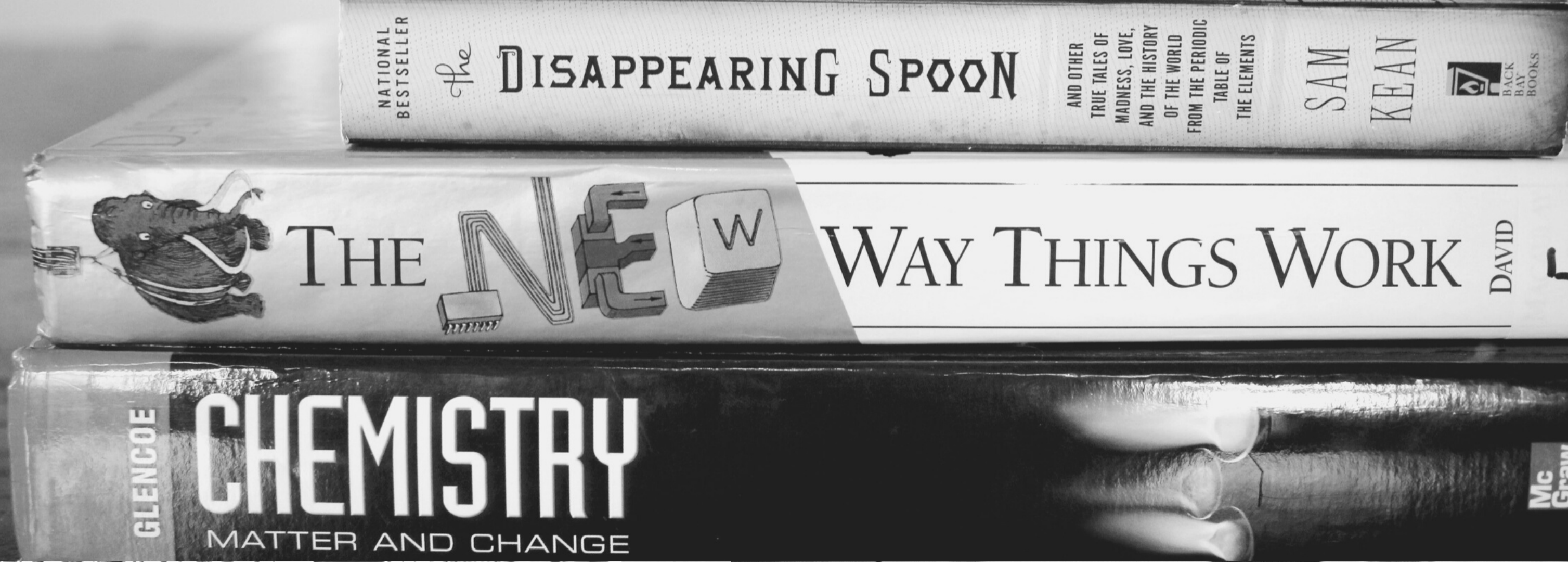
*A
Life*

Ideas

Living Books

Banquet of
Learning

Many Relations



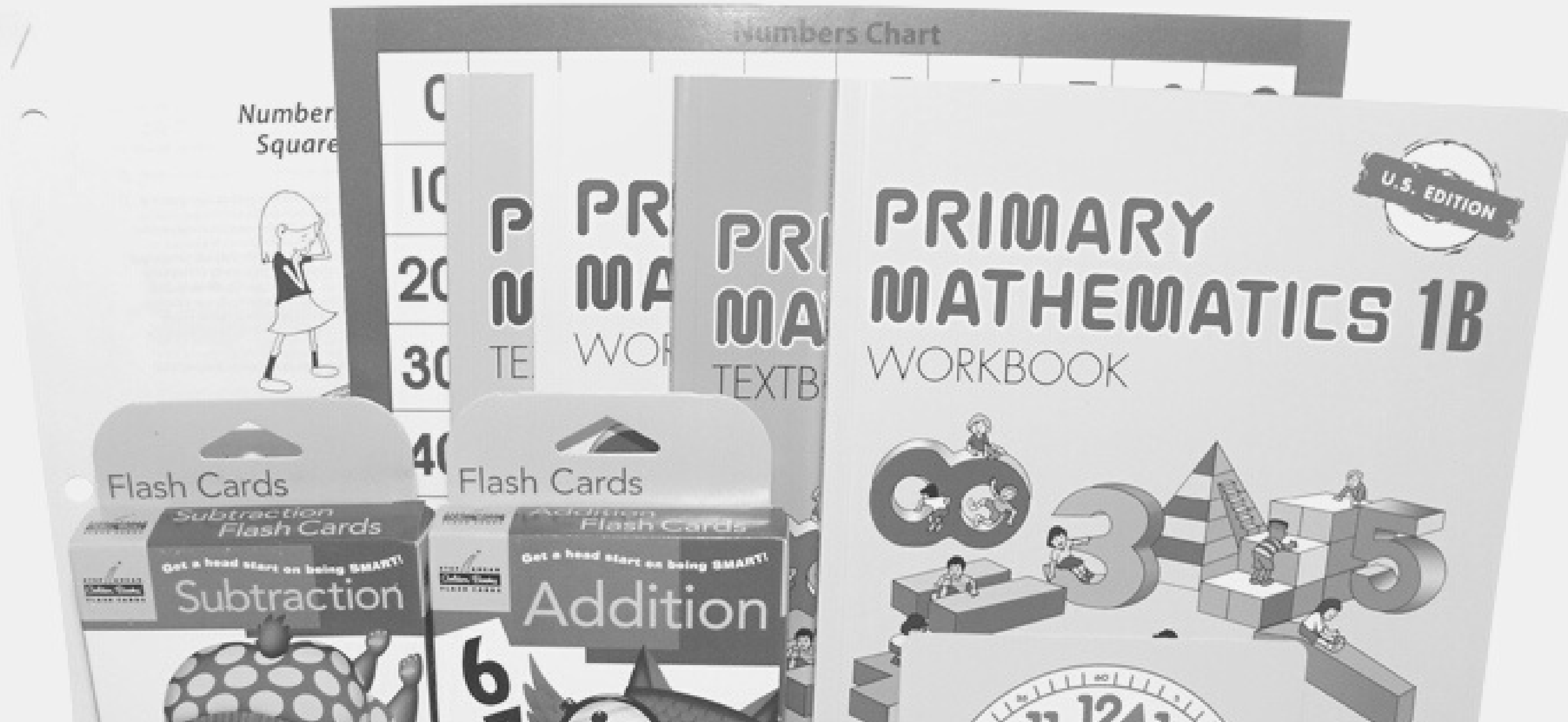
LIVING BOOKS



FIELD STUDIES



MATHEMATICS





THE SCIENCES



NATURE WALKS

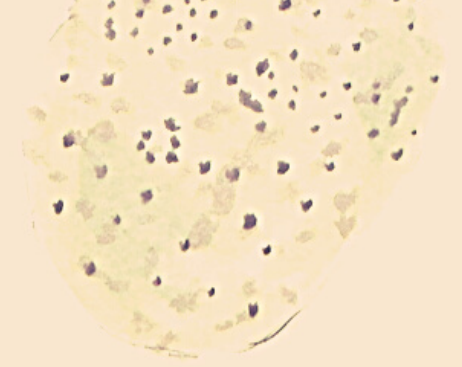
NATURES STUDIES

Black eyed Susan

The flower is round and
 20 mm across. The center
 is a dark brown color and
 the petals are yellow with
 a brown tip. The
 outside of the
 flower



10/13/11



10/13/11
 Black Walnut
 (Juglans nigra L.)
 Is a fruit green color with brown
 black spots. Spicy smell. Slightly sticky

Forsy
 . 4/2/11
 Bunker
 A yellow flower

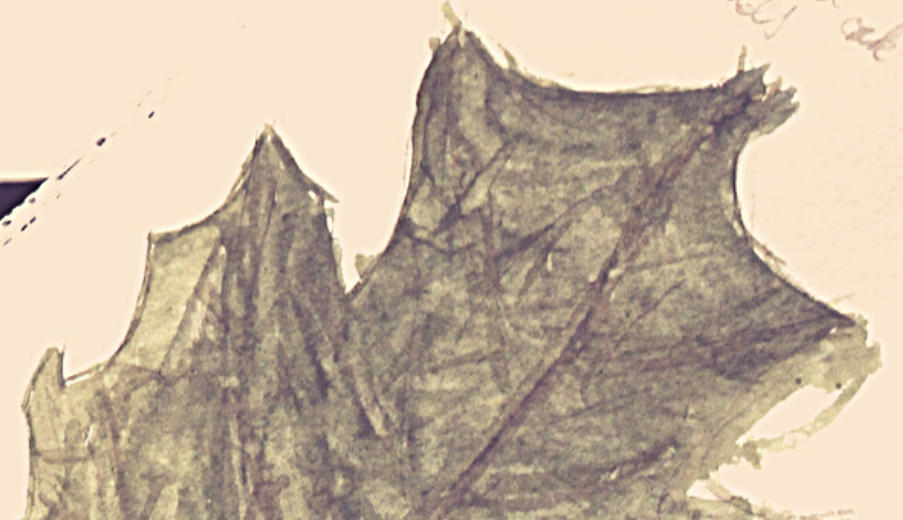


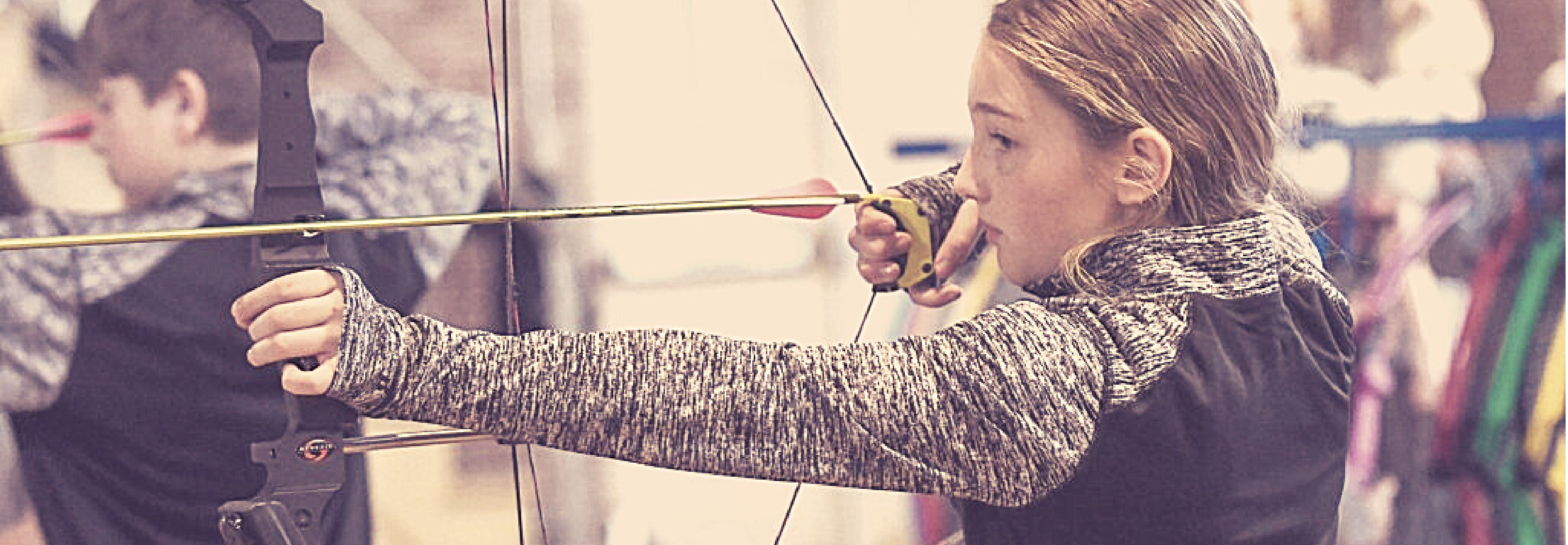
Name: Umbeliferous / Dwarf Umbelliferous
 Parasol Plant / Fetape / Feta
 Name: Schizanthus / Heptactis
 Location: Gullingham Place
 2000

10/13/11
 A small Potted
 Plant with round
 leaves and small
 flowers. Some leaves
 are white and
 some are yellow.
 They are
 very soft and
 fuzzy. It's
 good at growing
 in the sun and
 can adapt
 to different
 climates.



Watercolor red color
 Shaded green
 in water





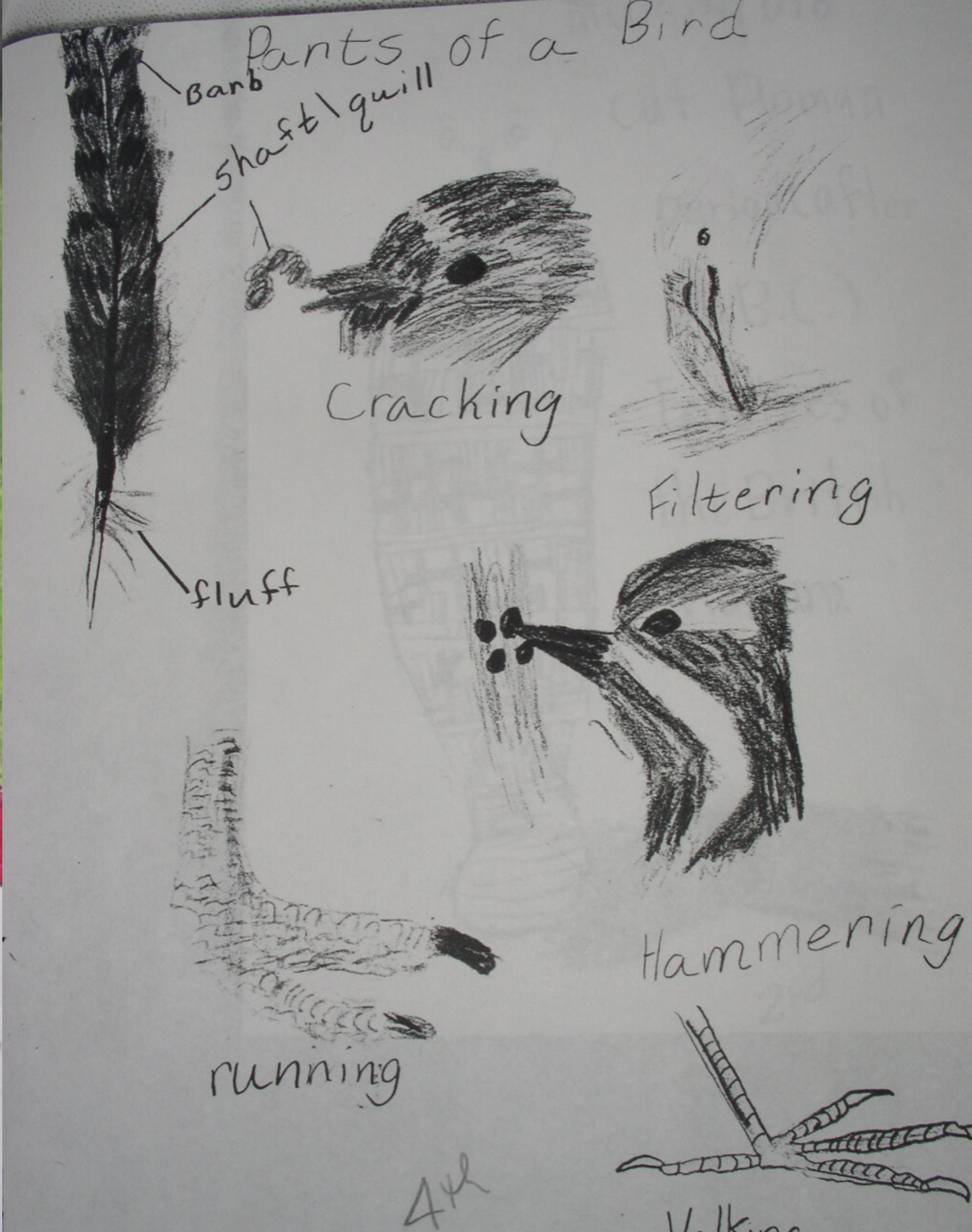
SPORTS...ARTS...MUSIC...LANGUAGES



THE STUDIES



Silbert Stuart,
Portrait of Abigail
Adams (ca. 1800)



OBSERVATION



HANDWORK



SHAKESPEARE

EDUCATION IS....



An
Atmosphere
Beauty & Order

Humane Schedule

Co-Learning

Relationships



A
Discipline
Habits

Soft Skills

Narration

Restorative
Practices & NHA



A
Life
Ideas

Living Books

Banquet

Outdoor Life

Many Relations

A black and white photograph of the Gillingham Charter School building. The building is a multi-story brick structure with a prominent central gable featuring a large arched window. Below the gable are two smaller rectangular windows. The facade is made of dark bricks with stone accents around the windows and corners. A sign on the lower part of the building reads "GILLINGHAM CHARTER SCHOOL". A white light fixture is mounted on the wall below the sign. The sky is overcast.

Where We're Going

Magnanimous Thinkers & Doers

GILLINGHAM
CHARTER SCHOOL

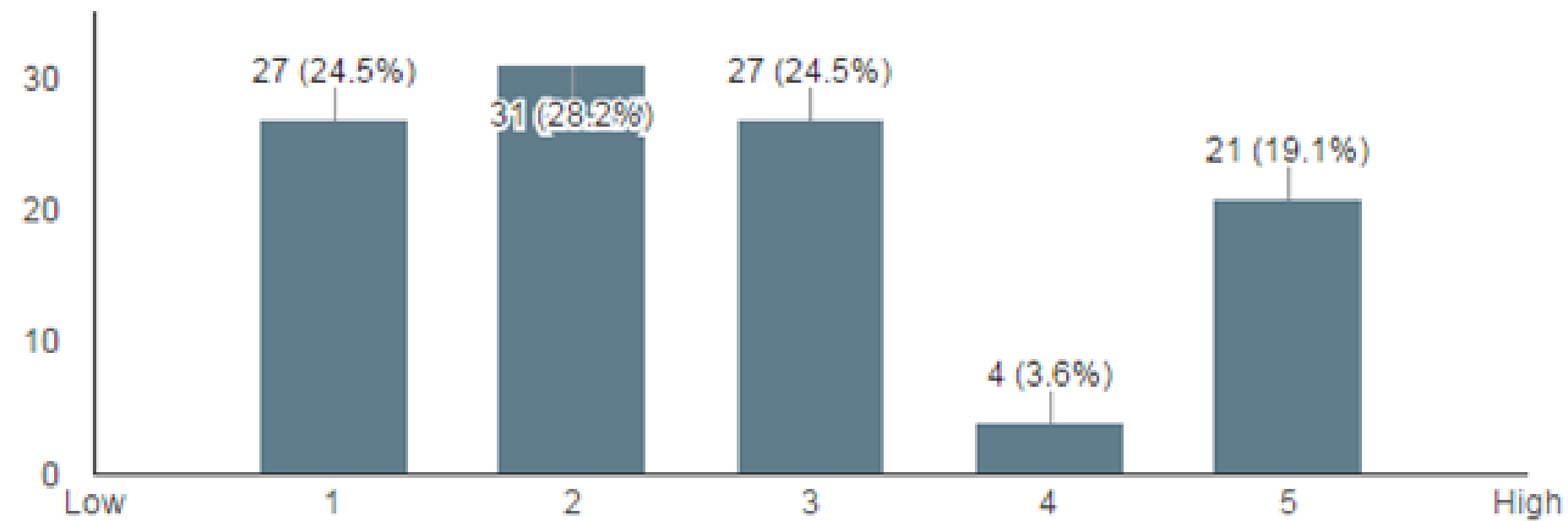
LOVE OF READING



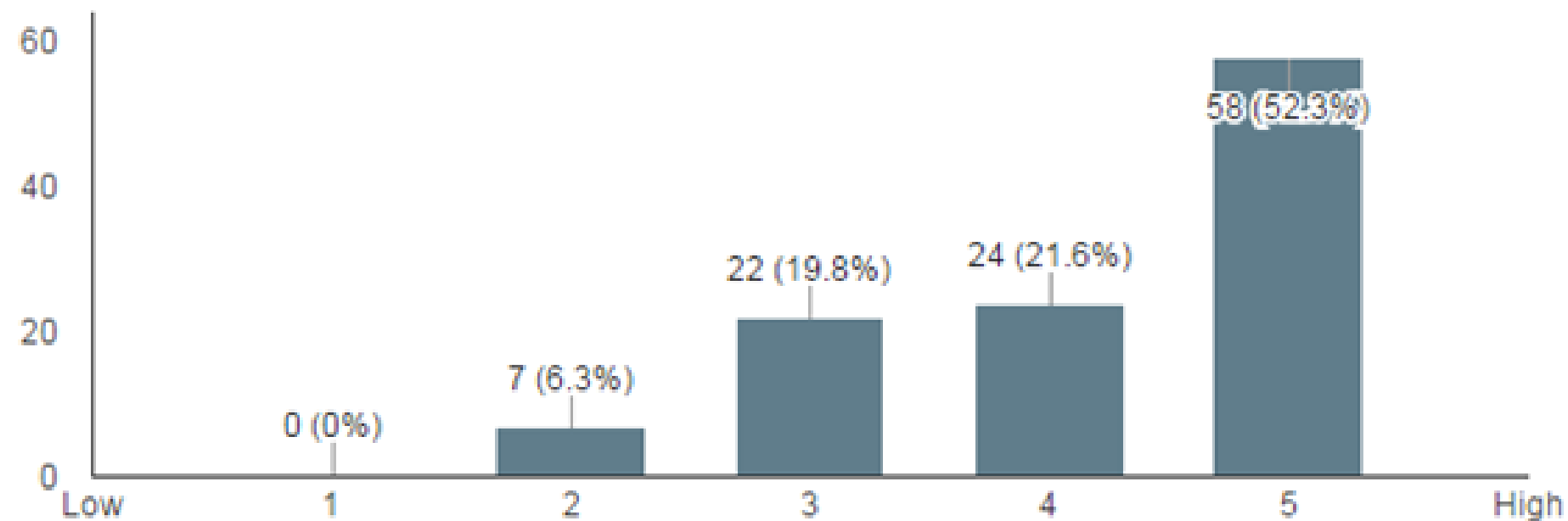
PARENTS SAID

Please rate your child's love of reading prior to attending Gillingham

(110 responses)



Love of reading NOW (111 responses)



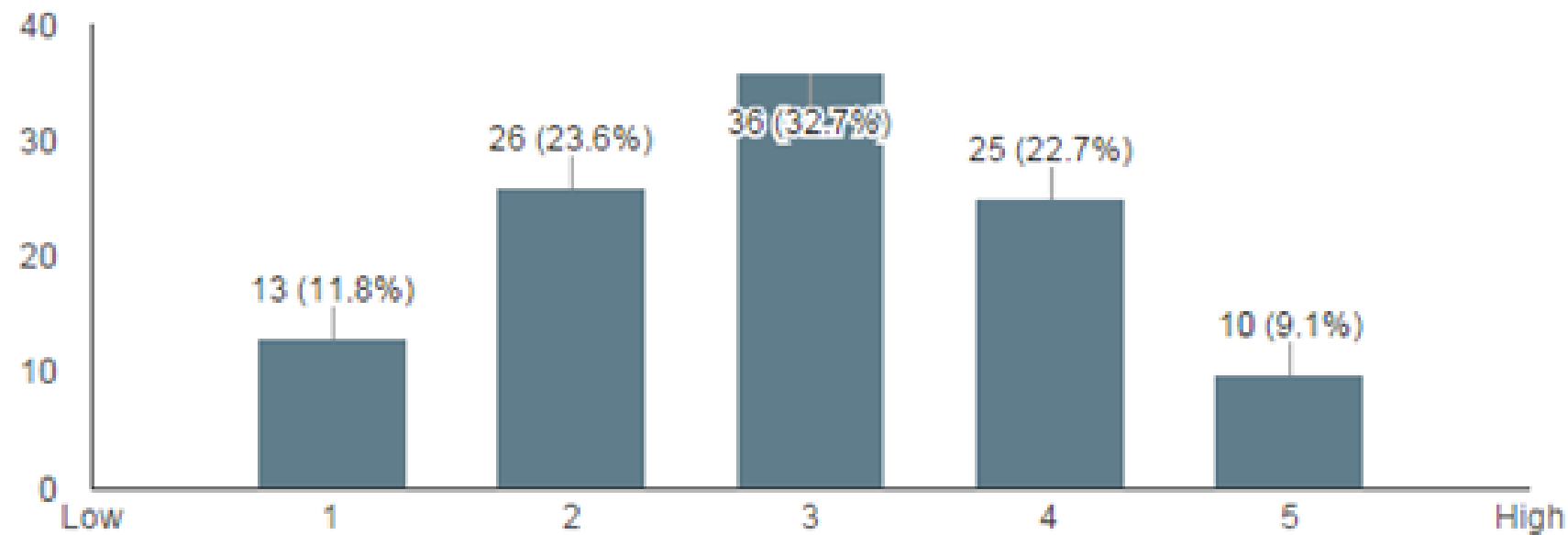
LEVEL OF VOCABULARY



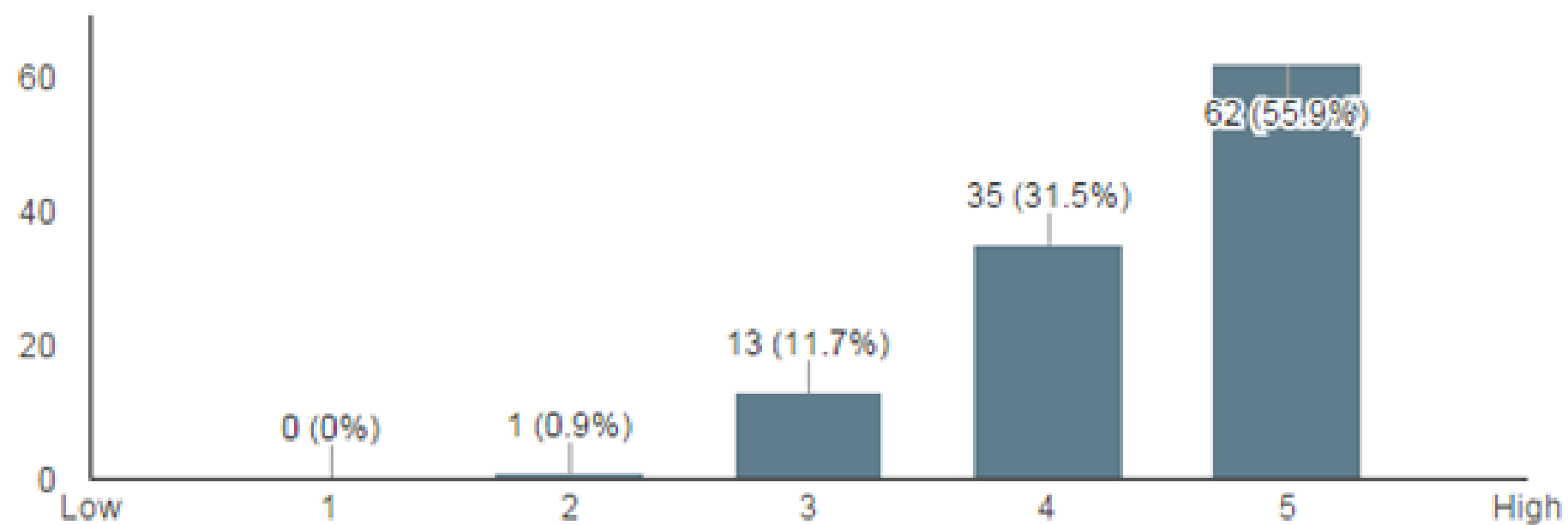
PARENTS SAID

Please rate your child's daily level of vocabulary prior to attending Gillingham

(110 responses)



Level of daily vocabulary words NOW (111 responses)

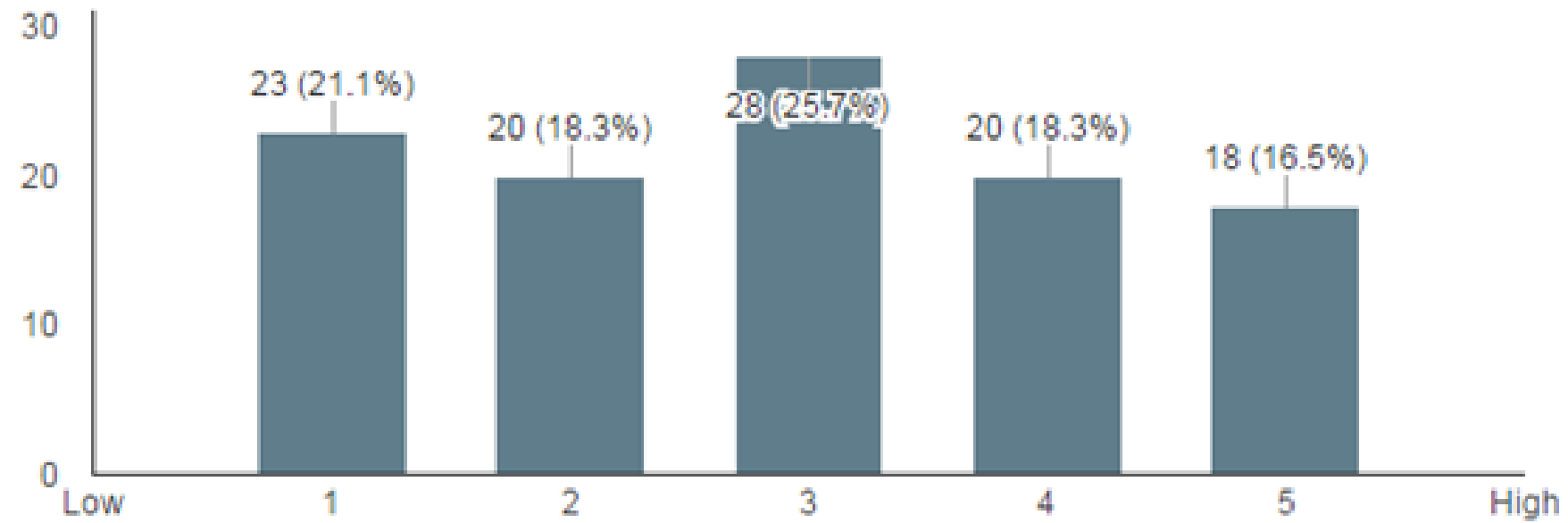


I AM, I CAN, I OUGHT, I WILL

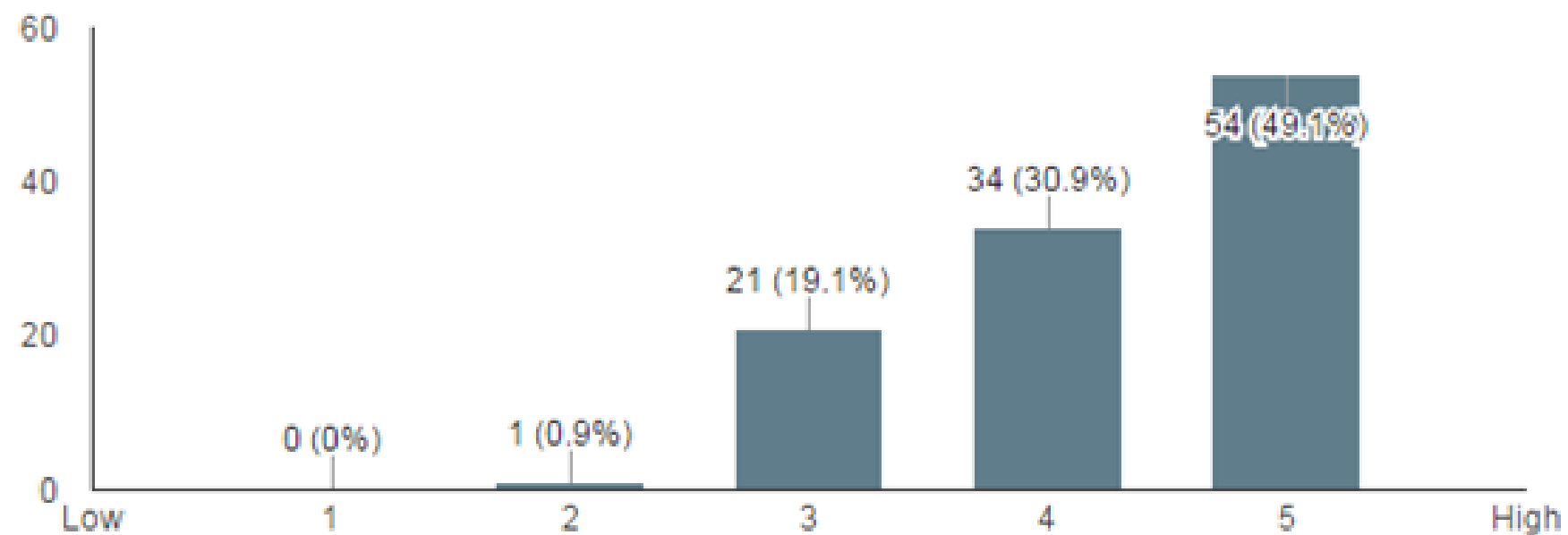


PARENTS SAID

Please rate your child's habit of following directions prior to attending Gillingham
(109 responses)



Habit of following directions NOW (110 responses)



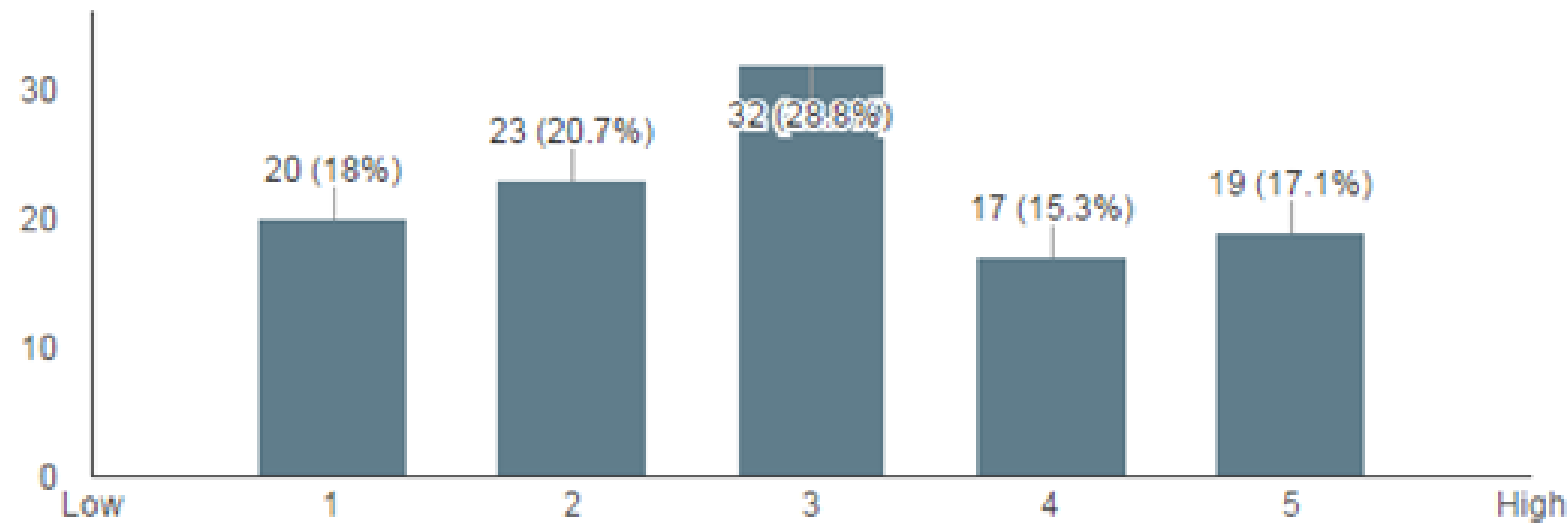
SOFT SKILLS: R & R



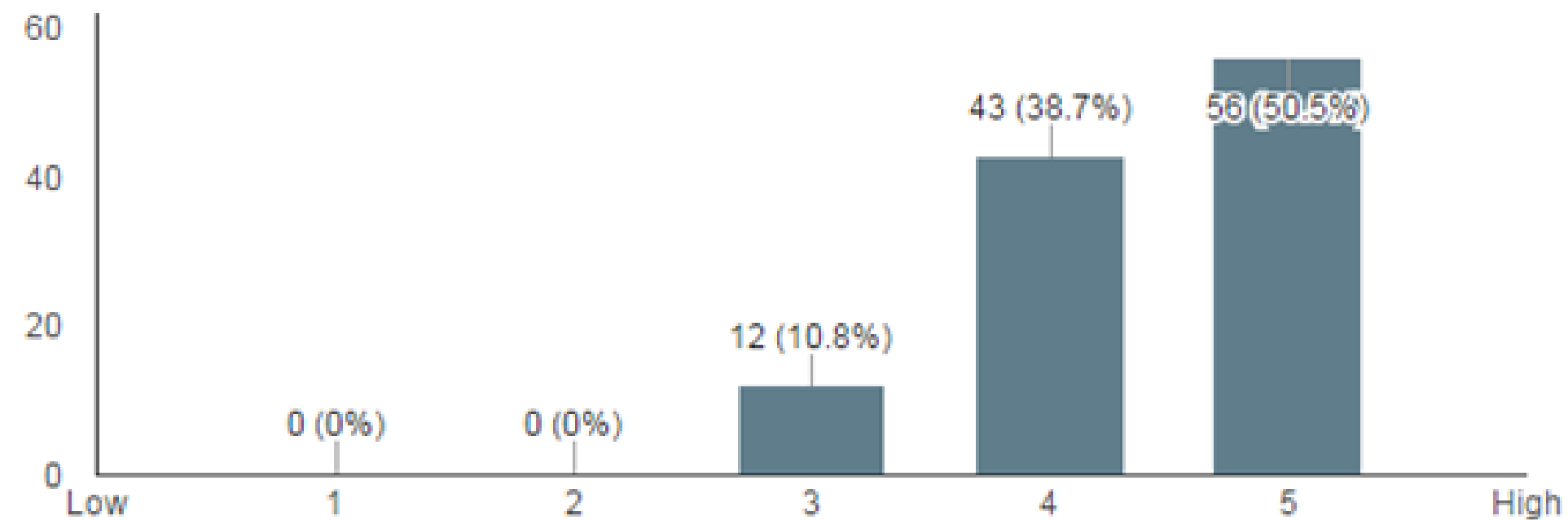
PARENTS SAID

Please rate your child's habits of respect and responsibility prior to attending Gillingham

(111 responses)



Habits of respect and responsibility NOW (111 responses)



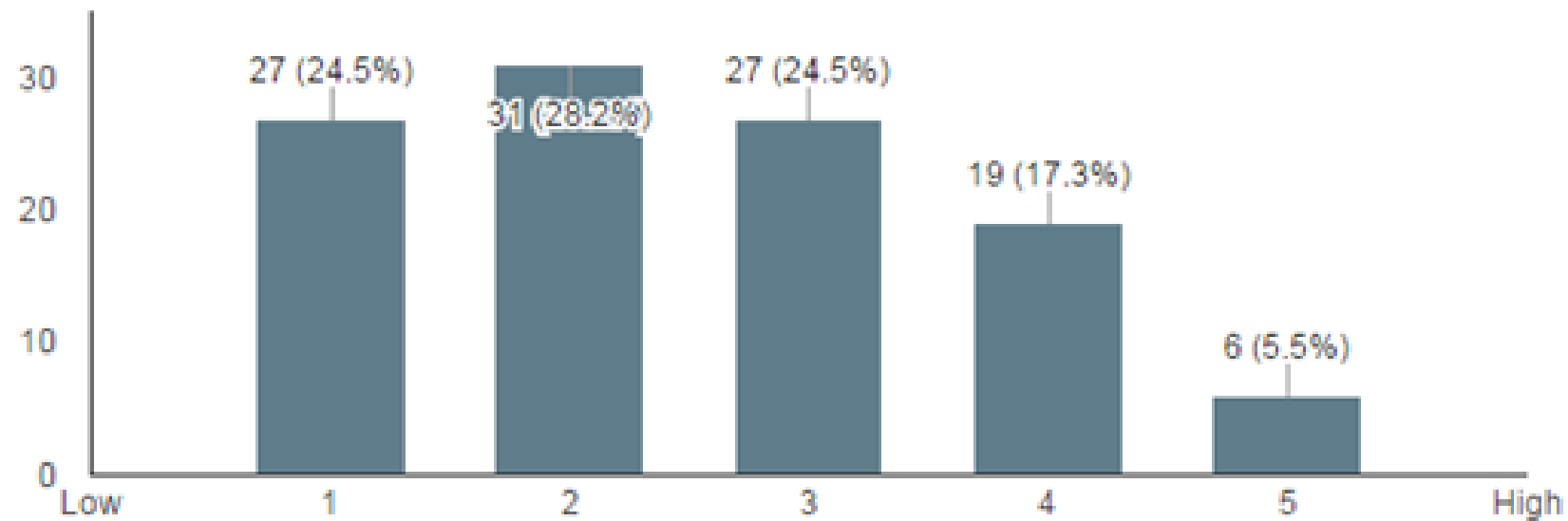
SOFT SKILLS: COMMUNICATION



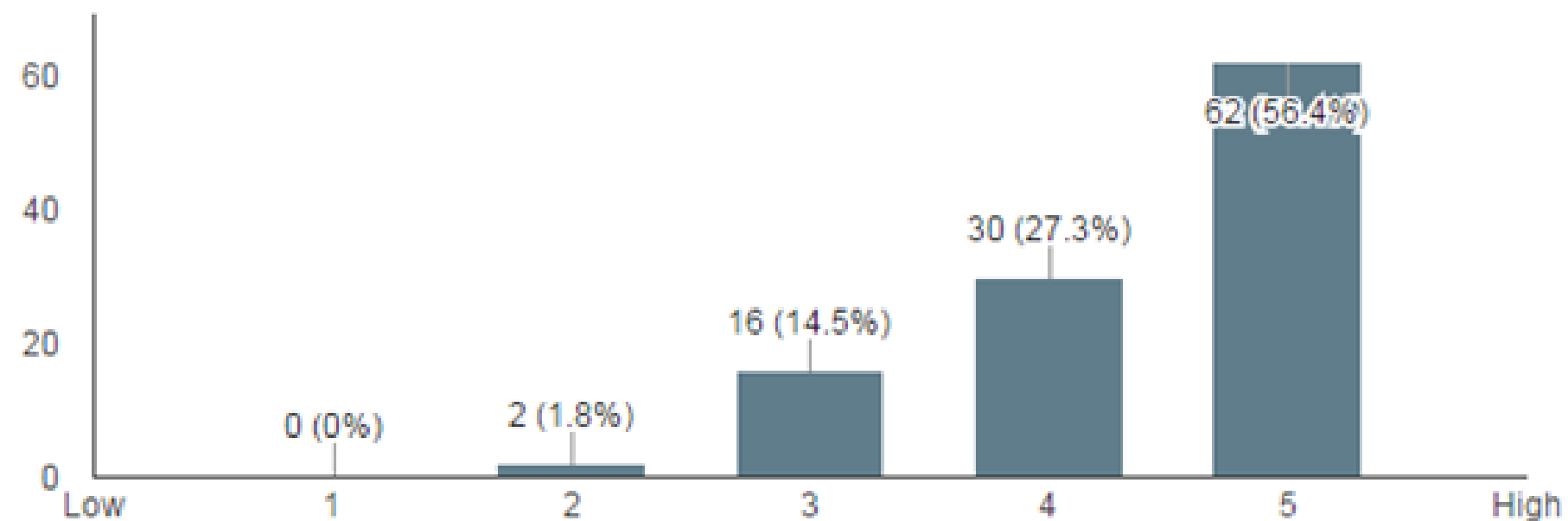
PARENTS SAID

Please rate your child's level of participation in engaging conversation prior to attending Gillingham

(110 responses)



Level of participation in conversation NOW (110 responses)



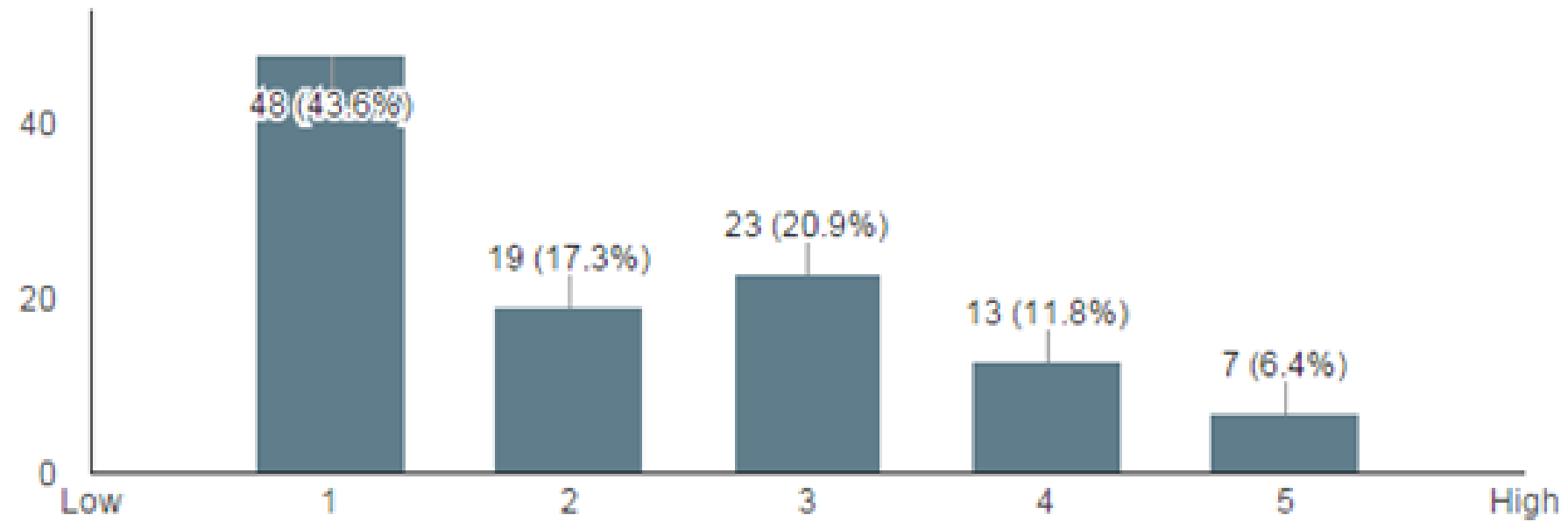
LOVE OF SCHOOL



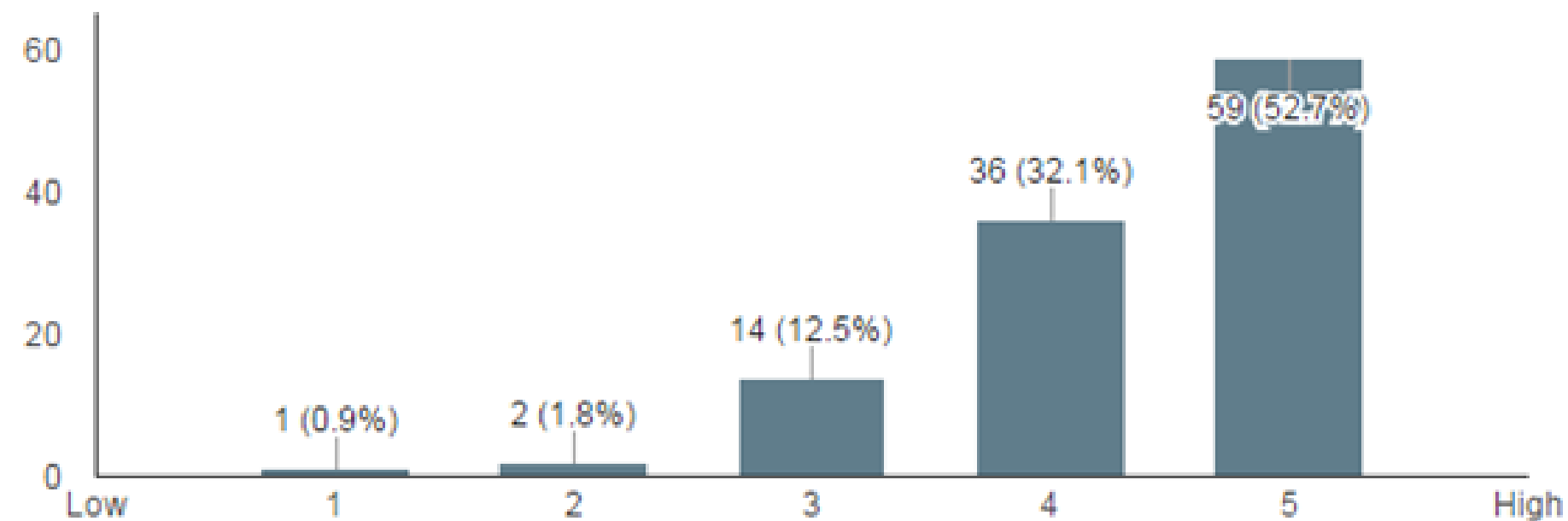
PARENTS SAID

Please rate your child's overall love of school prior to attending Gillingham

(110 responses)



Overall love of school NOW (112 responses)



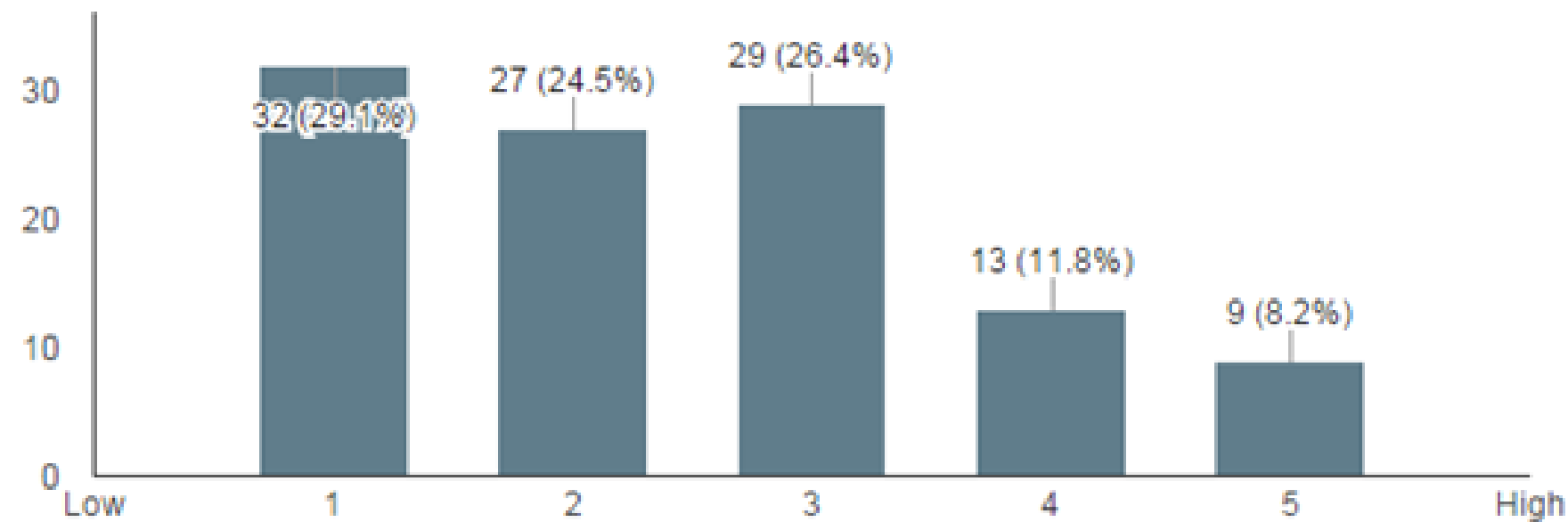
LOVE OF LEARNING



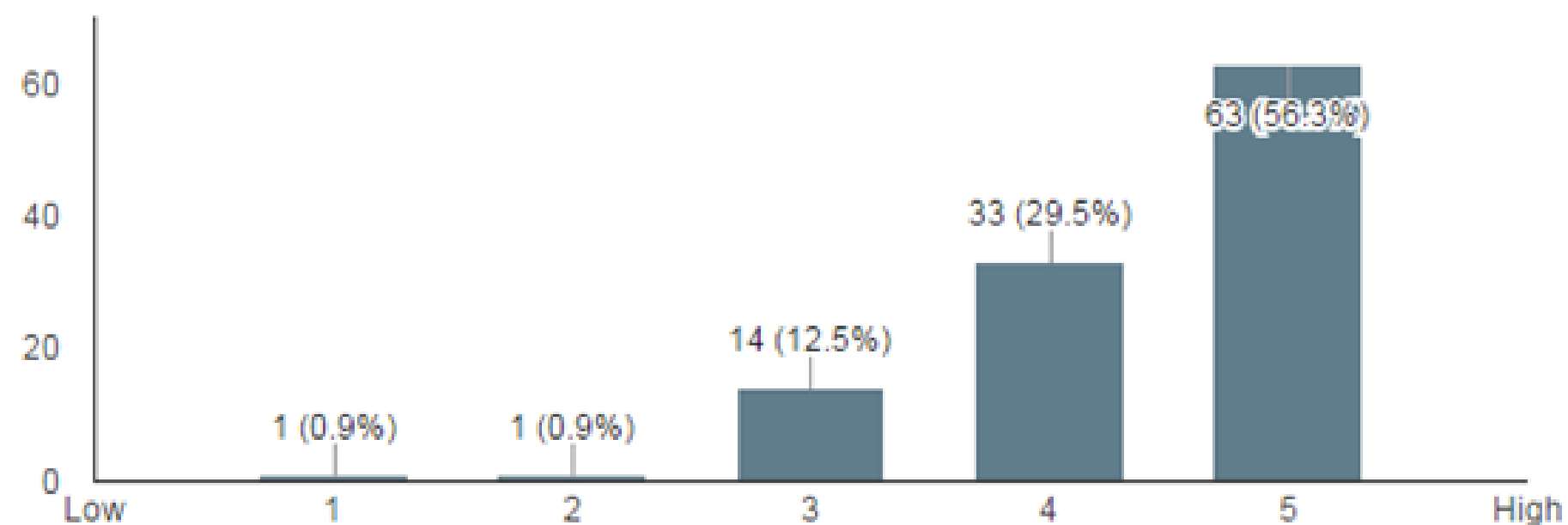
PARENTS SAID

Please rate your child's overall love of learning prior to attending Gillingham

(110 responses)



Love of Learning NOW (112 responses)



ACCEPTED BY....

*Alvernia University
Bard College at Simon's Rock
Bloomsburg University
Drexel University
East Stroudsburg Univeristy
Eastern University
Hiram G. Andrews Center
Johnson and Wales Culinary
Keystone College
Lebanon Valley College
Moravian College
Penn Tech
Shippensburg University
Temple University
Wilkes University
University of Pittsburg*

GRADS CHOSE...

*Albright College
Bard College at Simon's Rock
Bingham Young University
Career Institute of Technology
Edinboro University
Goshen College
Kutztown University
Lehigh Carbon Community LCCC
London School of Economics
McCann School of Bus & Tech
Millersville University
Pennsylvania State University
Roberts Wesleyan College
Simmons College
United States Air Force & Army
Valley Forge University*



FIRST GRADUATING CLASS

"Ya know what, Mrs. Hutchinson? I'm a Renaissance Man."

QUESTIONS?

GILLINGHAM
CHARTER SCHOOL



ENROLLMENT & LOTTERY

WEBSITE

gillinghamcharterschool.org

Contact Info

ElisaBeth Hutchinson, Coordinator

ehutchinson@gillinghamcharterschool.org



GILLINGHAM

CHARTER SCHOOL

A Charlotte Mason Public Education